

259 MIDPARK WAY SE | SUITE 321 FEATURES

- Boardroom
- Kitchen with barn door
- 3 window offices
- Available in 30 days
- Private reception area
- Choose paint and floor colours



Dedicated on-site maintenance personnel



Conveniently access main roadways



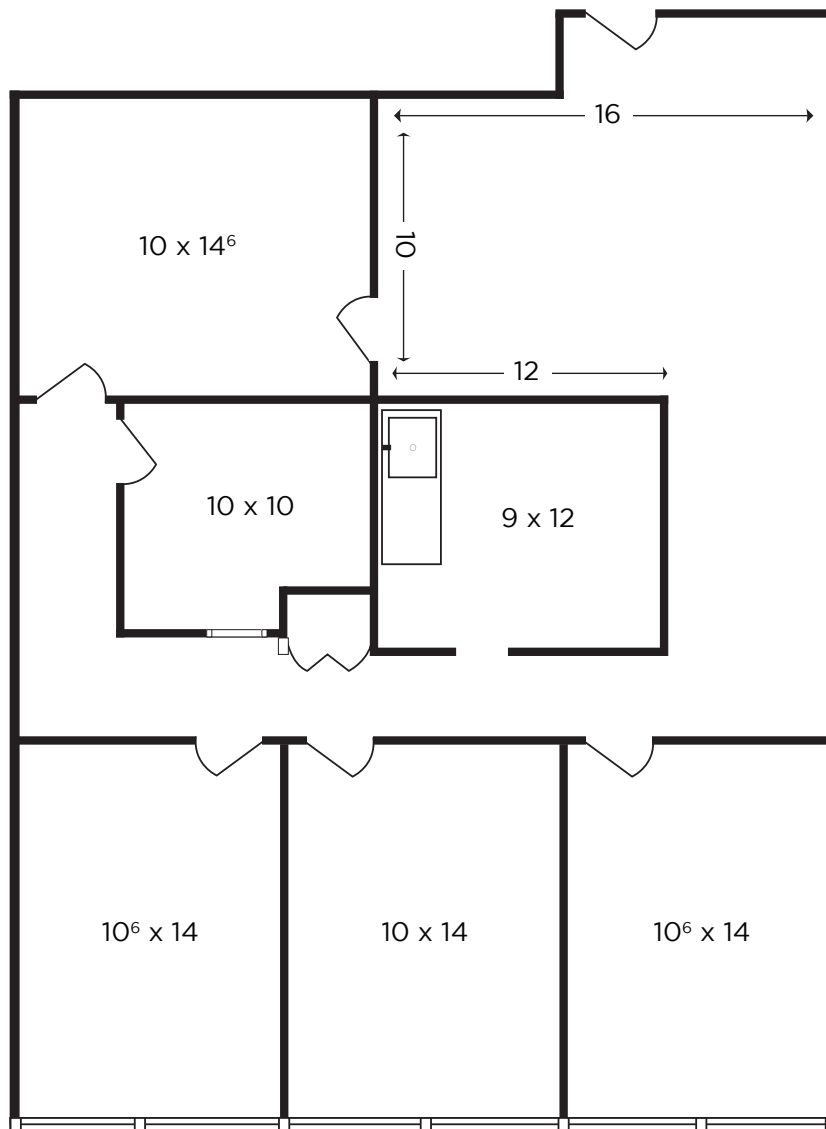
Numerous bus routes that access 3 LRT stations



Competitive operating costs



Nearby retail in Midnapore, Sundance & Shawnessy



1,525 SQ.FT.



MIDNAPORE OFFICE SPACE

TO VIEW THIS UNIT, CONTACT:

Brian Carlin

C: 403.589.6897

O: 403.256.3888

bcarlin@remax-landan.com

Vyetta Sunderland

C: 403-660-5839

O: 587-349-4322

VSunderland@legacy-partners.ca